



# MONTHLY MEMBERSHIP PROGRESS REPORT

District 23 C

Results as of: 08/31/2017

GMT: MAHESH CHITNIS

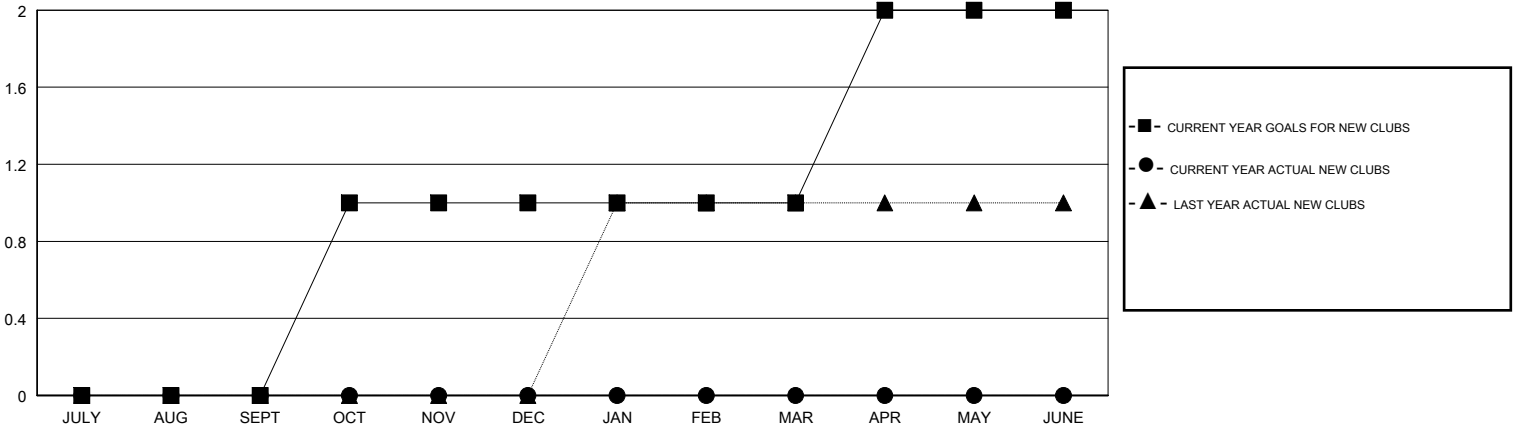
LOCATION CONNECTICUT

GMT CA

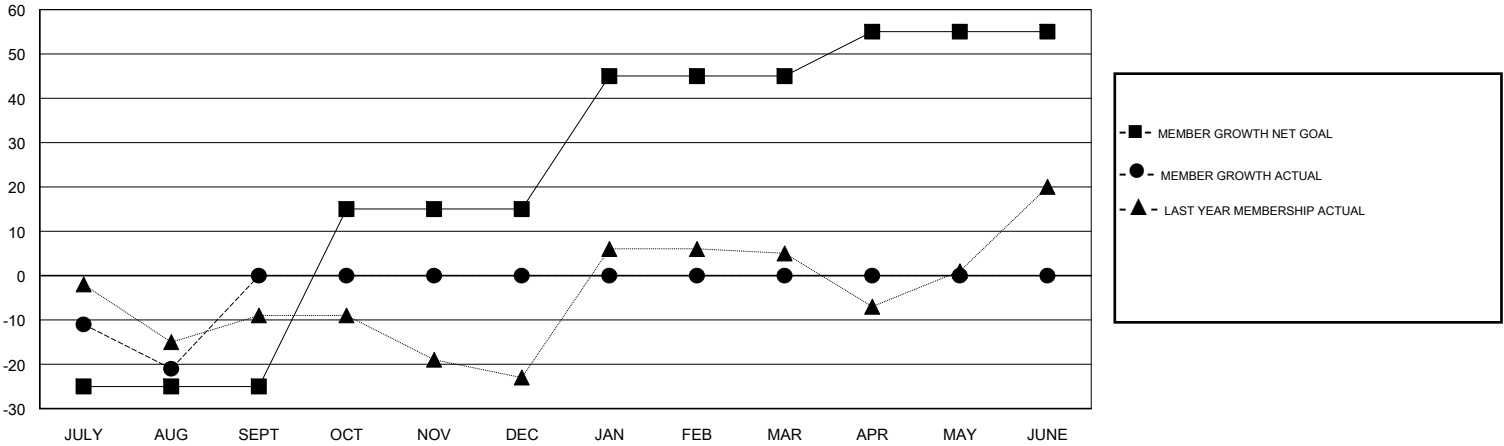
Clubs			
RESULTS FOR 2017-2018			
QUARTER	NEW CLUB GOAL	NEW CLUBS	DROPPED CLUBS
JULY/AUG/SEPT	0	0	0
OCT/NOV/DEC	1	0	0
JAN/FEB/MAR	0	0	0
APR/MAY/JUNE	1	0	0

Members			
RESULTS FOR 2017-2018			
QUARTER	MEMBER GROWTH NET GOAL	MEMBER GROWTH ACTUAL	DROPPED MEMBERS ACTUAL (including transfers)
JULY/AUG/SEPT	-25	3	24
OCT/NOV/DEC	40	0	0
JAN/FEB/MAR	30	0	0
APR/MAY/JUNE	10	0	0

GOALS AND ACTUAL NEW CLUBS CUMULATIVE



GOALS AND ACTUAL MEMBERS CUMULATIVE



DROPPED CLUBS: 0	2 CLUBS OF 53 ADDED 1 OR MORE NEW MEMBERS	<u>GENDER DISTRIBUTION</u>	
DROPPED MEMBERS		MALE	1,089 (64.10%)
DECEASED	4	FEMALE	610 (35.90%)
CLUB CANCELLED	0	Women Percentage Fiscal Year Goal: 40%	
OTHER	20	TOTAL FAMILY UNIT MEMBERS	327
TOTAL	24	FAMILY MEMBERS PAYING HALF DUES	167

[CLICK HERE FOR CUMULATIVE MEMBERSHIP DATA](#)